



LIGHT REFLECTING PUMP-APPLIED CEMENTITIOUS FLOOR SCREED

Q: “Can a Floor be upgraded to give a long lasting, light reflecting surface, in ‘A Matter of Days’?”

A: “With a **LIGHT REFLECTING** Pump Applied Cementitious Floor Screed – White – from **CG Flooring Systems Ltd**, it can!”



- **LIGHT REFLECTING** Screed is an extremely tough and durable* pump-applied cementitious floor screed - minimum 8mm thick, that takes foot traffic within 4 hours and wheeled traffic within 24 hours!
- **LIGHT REFLECTING** Screed is designed specially for rapid application in areas and situations where down time is at a premium and environmental matters are important. **Up to 1000 sq.metres, can be laid in a Day!**
- **LIGHT REFLECTING** Screed is an environmentally friendly product.
- Abrasion resistance achieves ‘Special’ Class under BS8204-2:1999 – Heavy Duty.

LIGHT REFLECTING PUMP-APPLIED CEMENTITIOUS FLOOR SCREED

5 Stage Programme

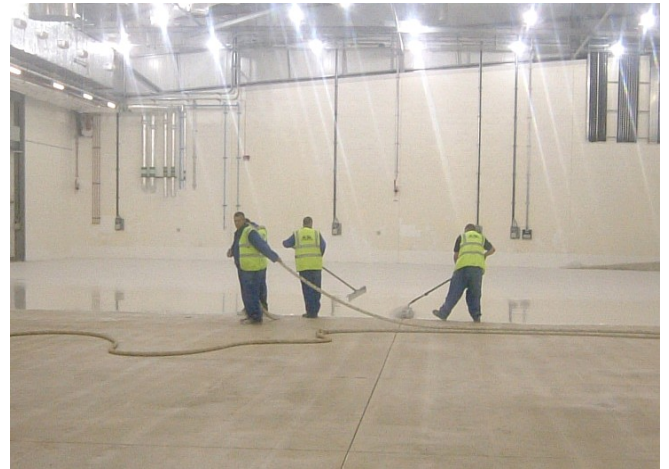
Stage 1: Prep It. Shot-blast / Scabble the existing surface, then thoroughly clean the prepared surface.

Stage 2: Prime It. Apply 2 coats of CGFS Screed Primer and allow to cure.

Stage 3:



Mix It



Apply It



Leave It



Seal It

Stage 4: Joint It. Mirror through all existing joints and fill with CGFS Joint Sealer.

Stage 5: Cure It. Allow 24 hours for the screed and sealer to cure before hand-over to the Client.

For more information on our Company, Products and range of Services, please call or visit our web site.